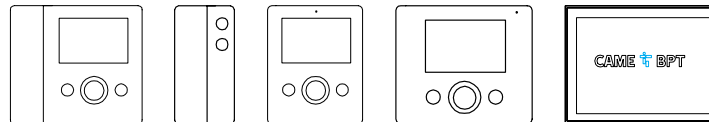
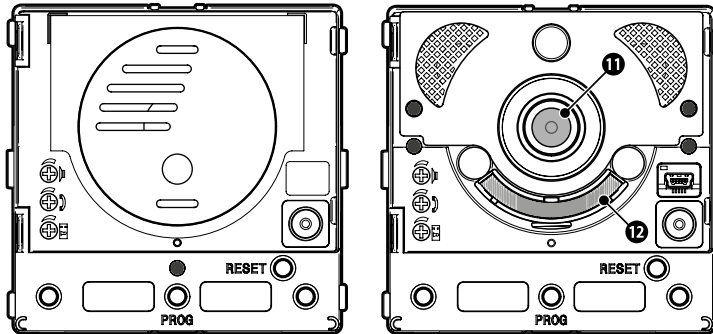


MTM AUDIO & VIDEO ENTRY KITS



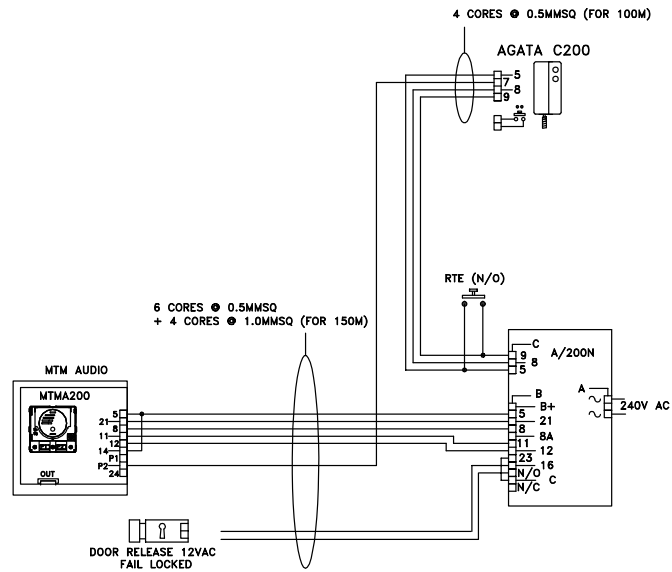
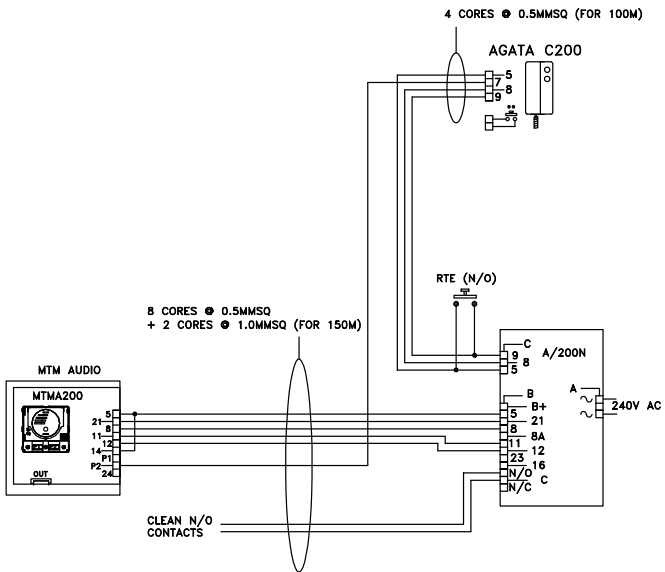
Installation Instructions

Technical Documentation

CONTENTS

- 03** MTM AUDIO > AGATA AUDIO
- 04** MTM AUDIO KEYPAD > AGATA AUDIO
- 05** MTM AUDIO > AGATA AUDIO 2 WAY
- 06** MTM AUDIO KEYPAD > AGATA AUDIO 2 WAY
- 07** MTM VIDEO > AGATA VIDEO
- 08** MTM VIDEO > AGATA VIDEO 2 WAY
- 09** MTM VIDEO KEYPAD > AGATA VIDEO 2
- 10** MTM VIDEO > PERLA VIDEO
- 11** MTM VIDEO KEYPAD > PERLA VIDEO
- 12** MTM VIDEO > PERLA VIDEO 2 WAY
- 13** MTM VIDEO KEYPAD > PERLA VIDEO 2 WAY
- 14** MTM VIDEO > OPALE VIDEO
- 15** MTM VIDEO KEYPAD > OPALE VIDEO
- 16** MTM VIDEO > OPALE VIDEO 2 WAY
- 17** MTM VIDEO KEYPAD > OPALE VIDEO 2 WAY
- 18** MTM VIDEO > XTS 7 VIDEO
- 19** MTM VIDEO KEYPAD > XTS 7 VIDEO
- 20** MTM VIDEO > XTS 7 VIDEO 2 WAY
- 21** MTM VIDEO KEYPAD > XTS 7 VIDEO 2 WAY
- 22** QUICK START -
MANUAL PROGRAMMING GUIDE
- 23** PRE-COMMISSIONING CHECKS
- 24** PROGRAMMING RECEIVERS
- 30** MTM NA 'QUICK' START INSTRUCTIONS

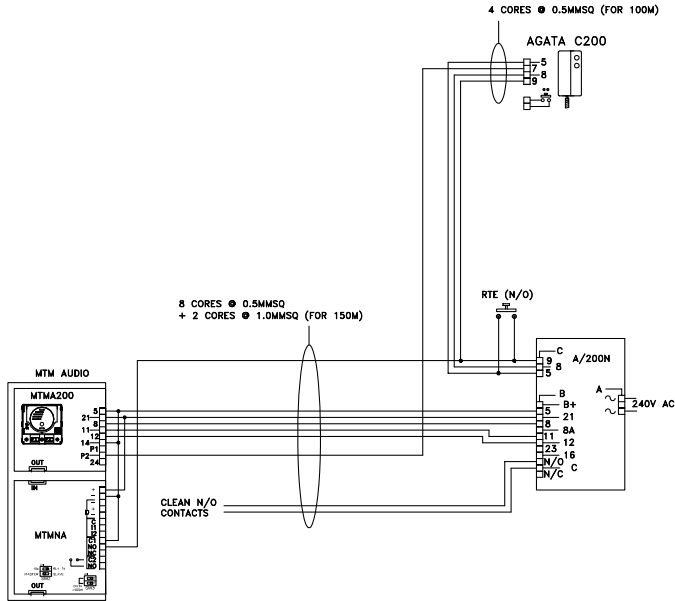
MTM AUDIO > AGATA AUDIO



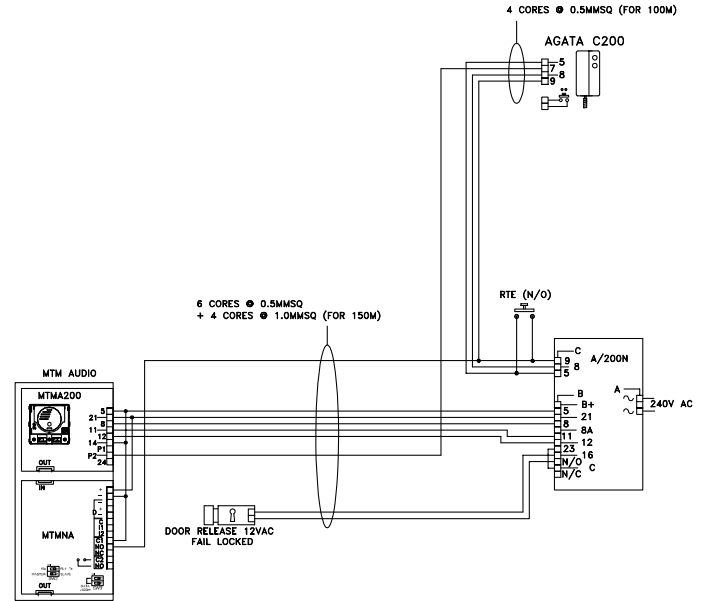
**DRAWING SUITABLE
FOR SYSTEM 200 KITS**

- VRWSAG1
- VRWFAQ1
- MTMSAG1
- MTMFAG1
- MTMSVRAG1
- MTMFVRAG1

MTM AUDIO KEYPAD > AGATA AUDIO



NOTE ON MTMNA KEYPAD
SET SW2 TO MASTER

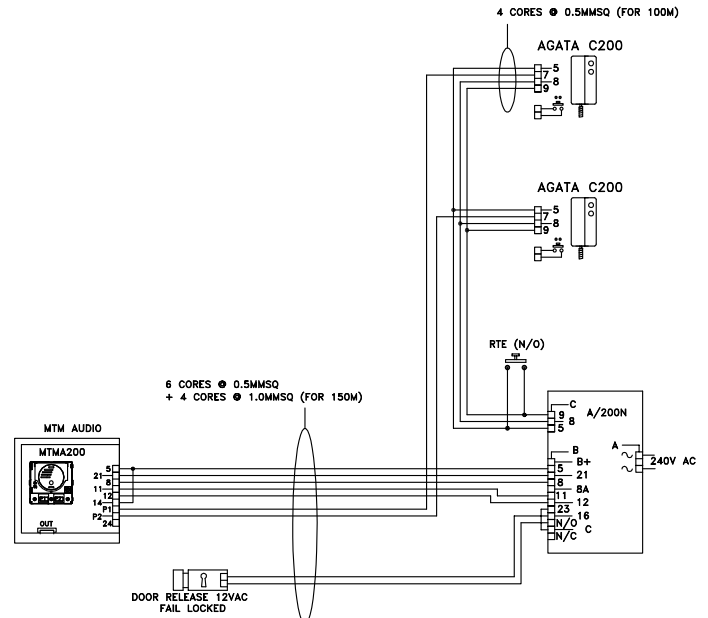
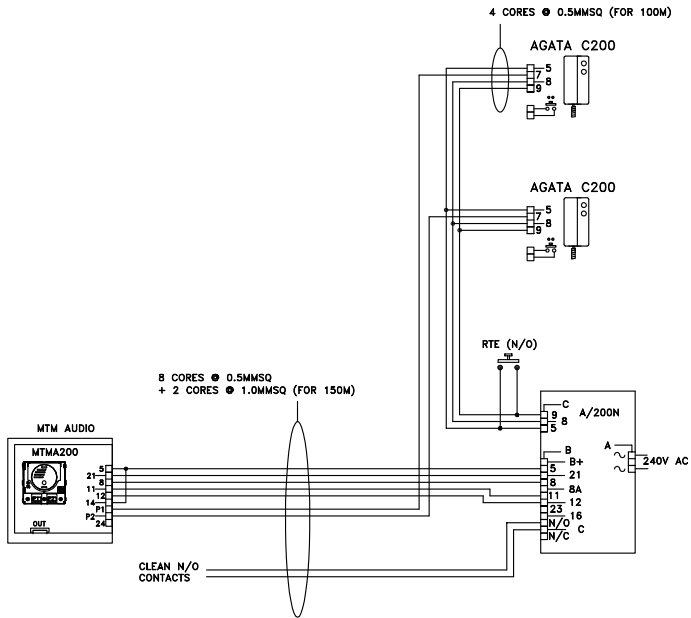


NOTE ON MTMNA KEYPAD
SET SW2 TO MASTER

DRAWING SUITABLE FOR X1 KITS

VRWSKAG1	MTMSKAG1	MTMSVRKAG1
VRWFKAG1	MTMFKAG1	MTMFVRKAG1

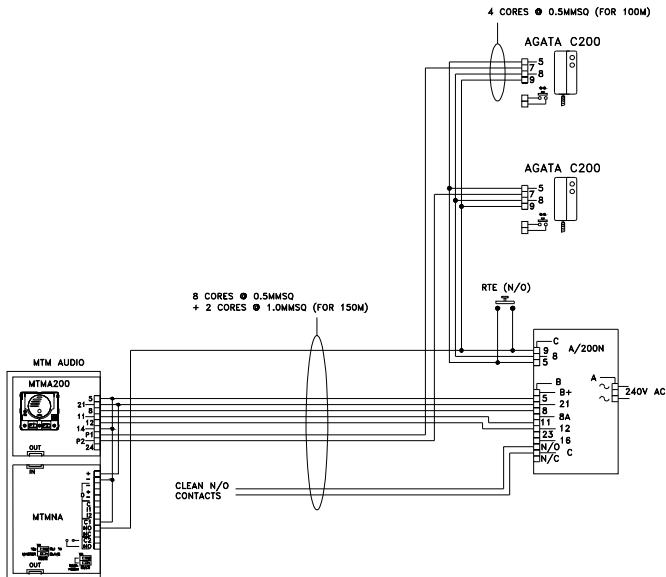
MTM AUDIO > AGATA AUDIO 2 WAY



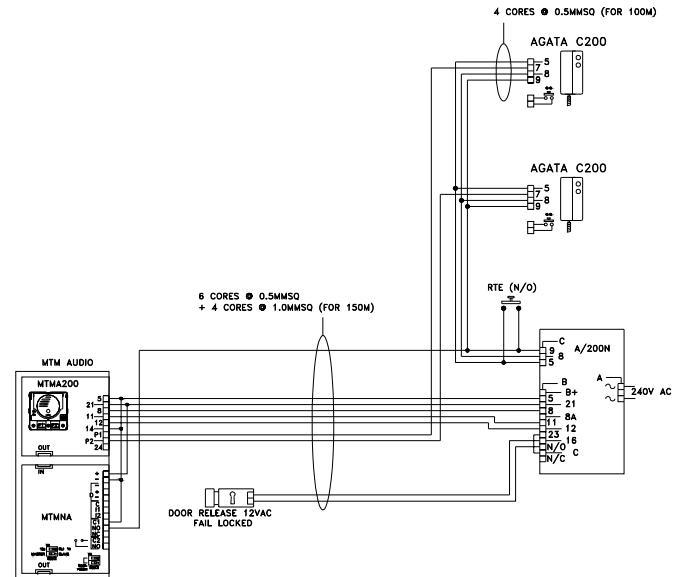
DRAWING SUITABLE FOR SYSTEM 200 KITS

VRWSAG2	MTMSAG2	MTMSVRAG2
VRWFAG2	MTMFAG2	MTMFFVRAG2

MTM AUDIO KEYPAD > AGATA AUDIO 2 WAY



NOTE ON MTMNA KEYPAD
SET SW2 TO MASTER

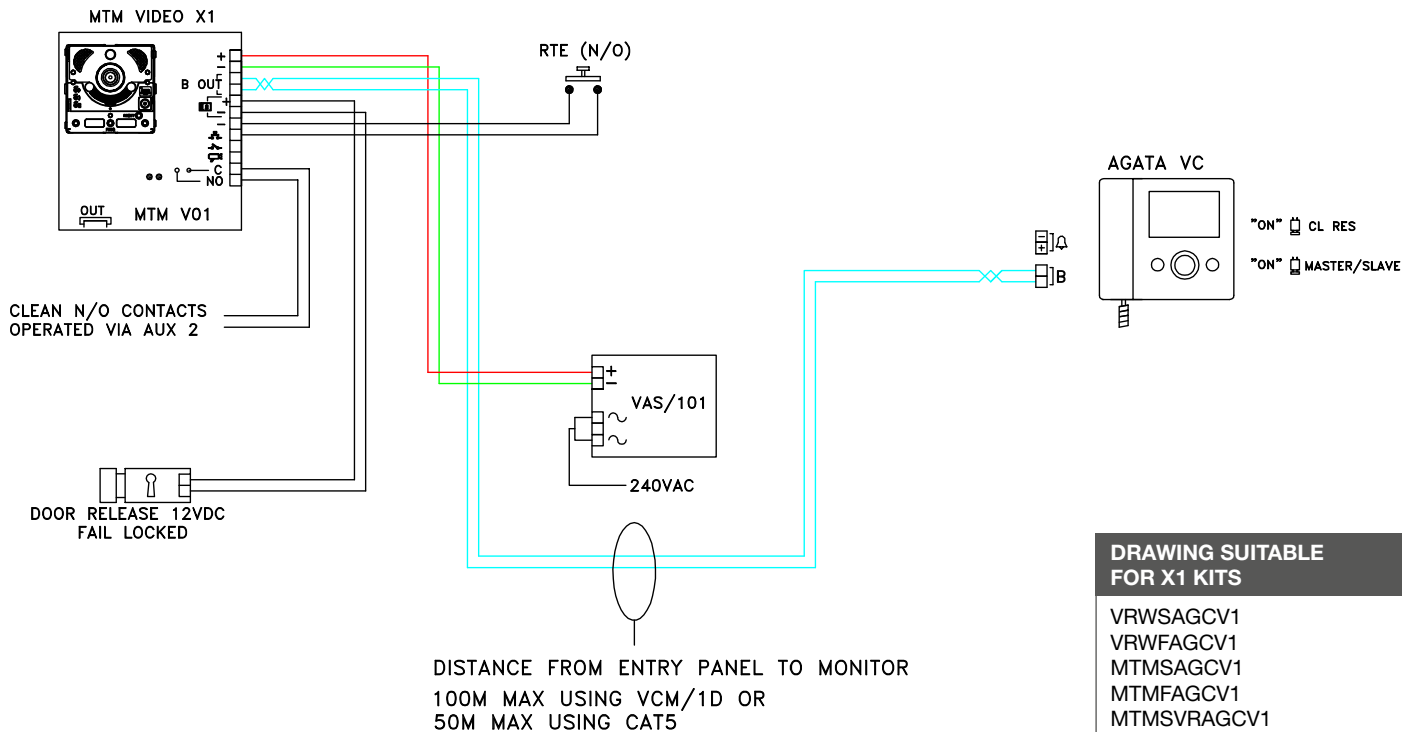


NOTE ON MTMNA KEYPAD
SET SW2 TO MASTER

DRAWING SUITABLE FOR SYSTEM 200 KITS

VRWSKAG2	MTMSKAG2	MTMSVRKAG2
VRWFKAG2	MTMFKAG2	MTMFVRKAG2

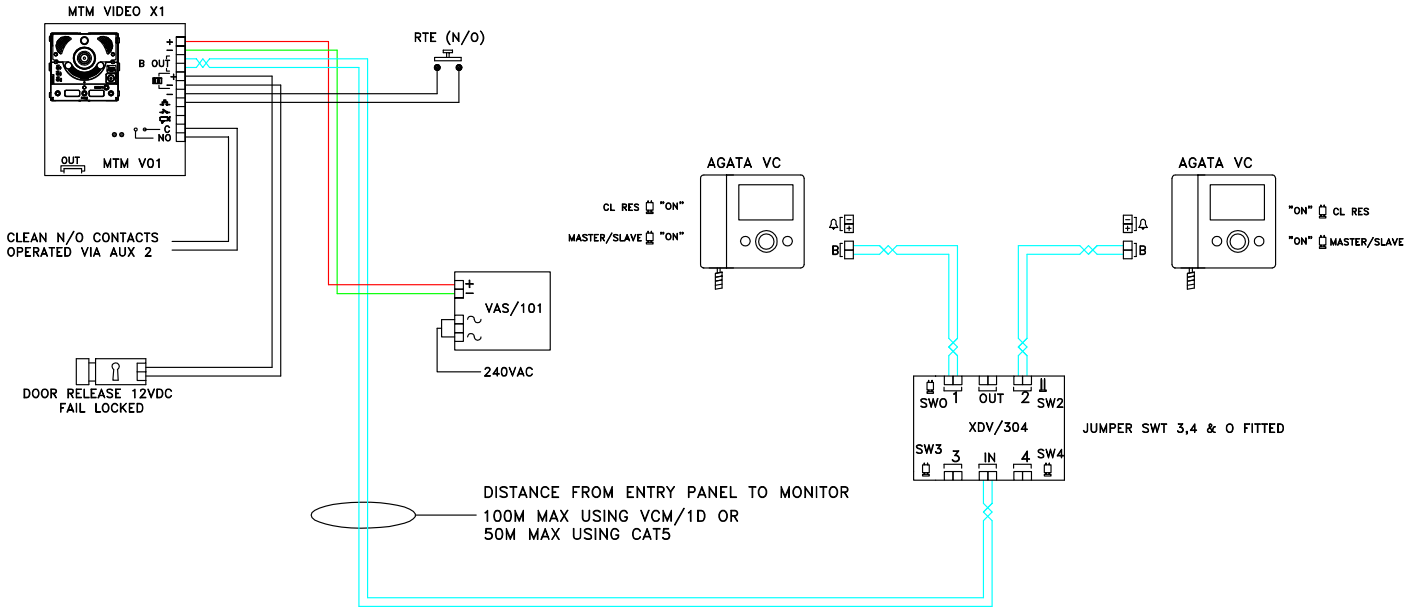
MTM VIDEO > AGATA VIDEO



**DRAWING SUITABLE
FOR X1 KITS**

- VRWSAGCV1
- VRWFGCV1
- MTMSAGCV1
- MTMFGCV1
- MTMSVRAGCV1
- MTMFVRAGCV1

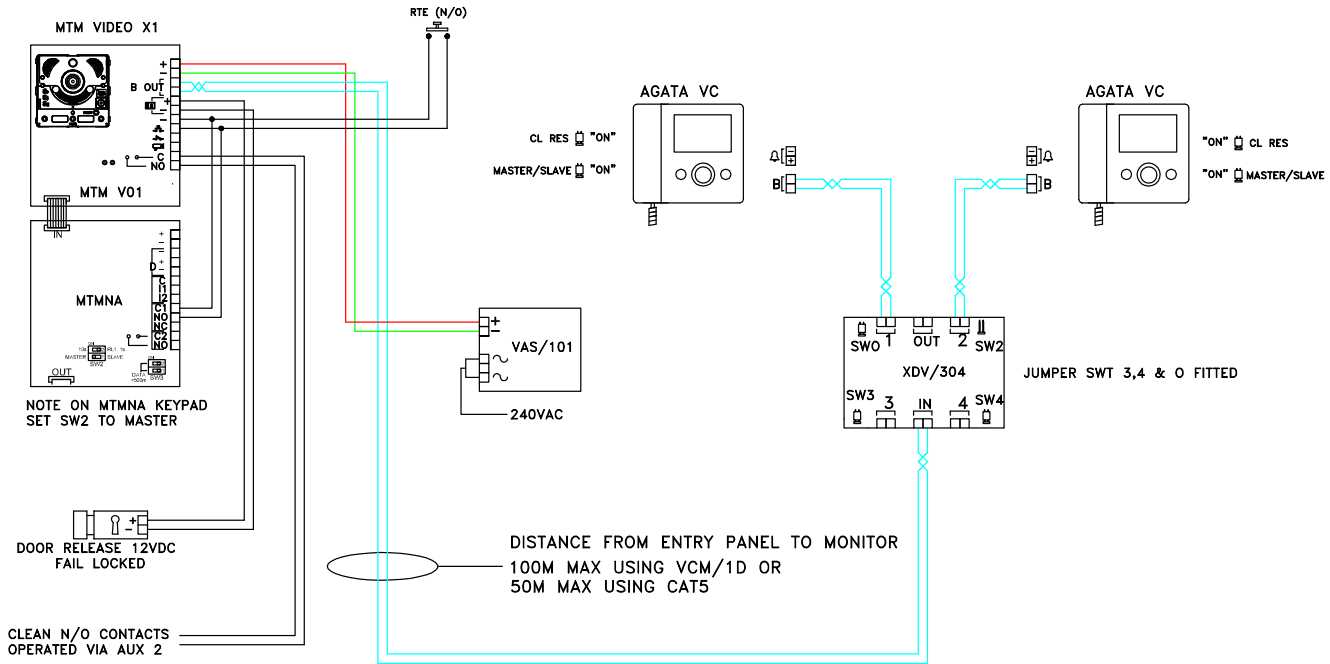
MTM VIDEO > AGATA VIDEO 2 WAY



DRAWING SUITABLE FOR X1 KITS

VRWSAGCV2	MTMSAGCV2	MTMSVRAGCV2
VRWFAGCV2	MTMFAGCV2	MTMFVRAGCV2

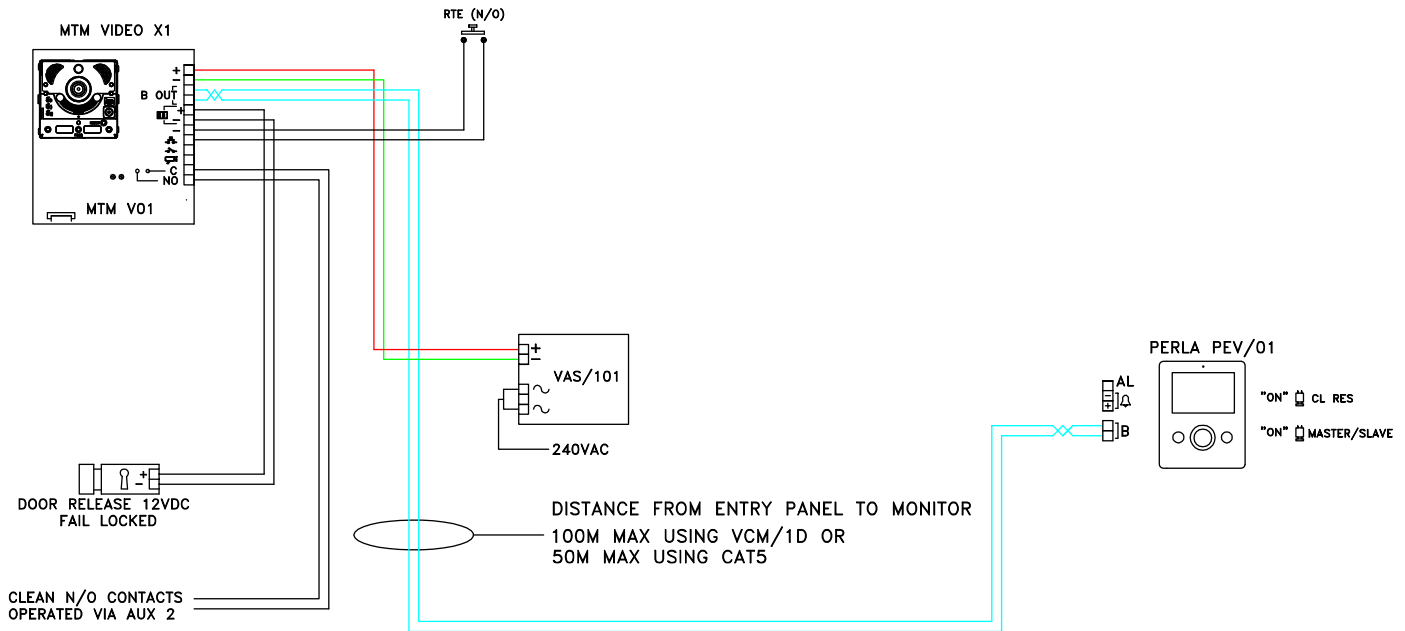
MTM VIDEO KEYPAD > AGATA VIDEO 2 WAY



DRAWING SUITABLE FOR X1 KITS

VRWSKAGCV2 MTMSKAGCV2 MTMSVRKAGCV2
VRWFKAGCV2 MTMFKAGCV2 MTMFVRKAGCV2

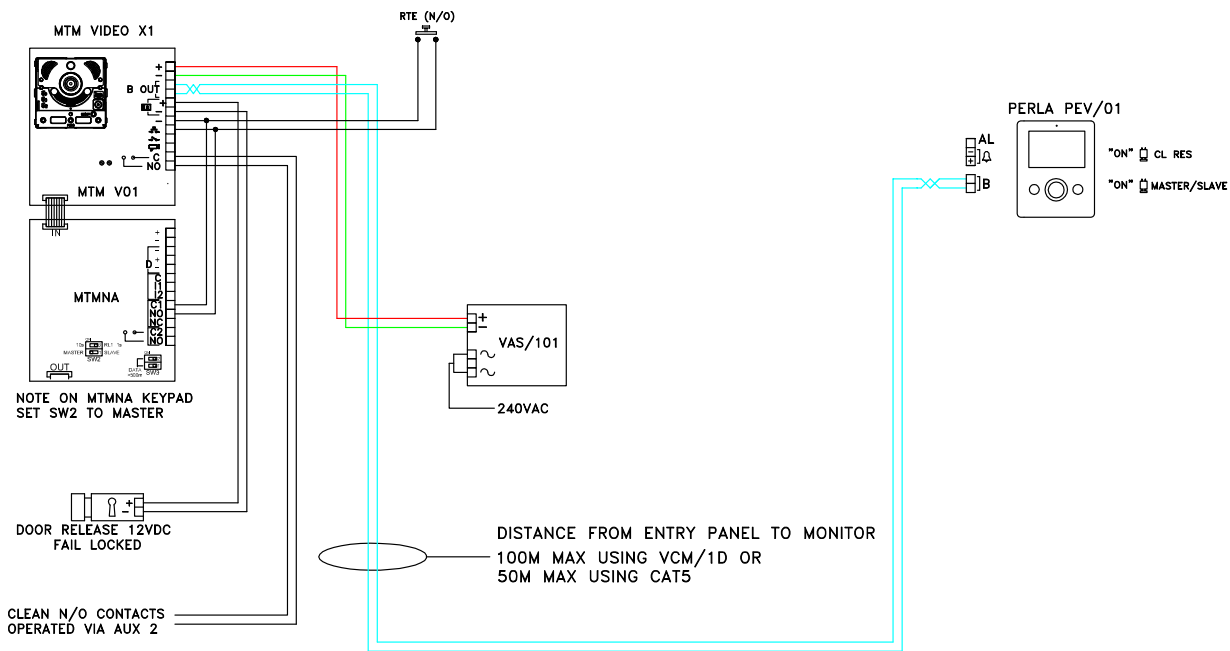
MTM VIDEO > PERLA VIDEO



DRAWING SUITABLE FOR X1 KITS

VRWSPWV1	MTMSPWV1	MTMSVRPWV1
VRWFPWV1	MTMFPWV1	MTMFVRPWV1
VRWSPBV1	MTMSPBV1	MTMSVRPBV1
VRWFPBV1	MTMFPBV1	MTMFVRPBV1

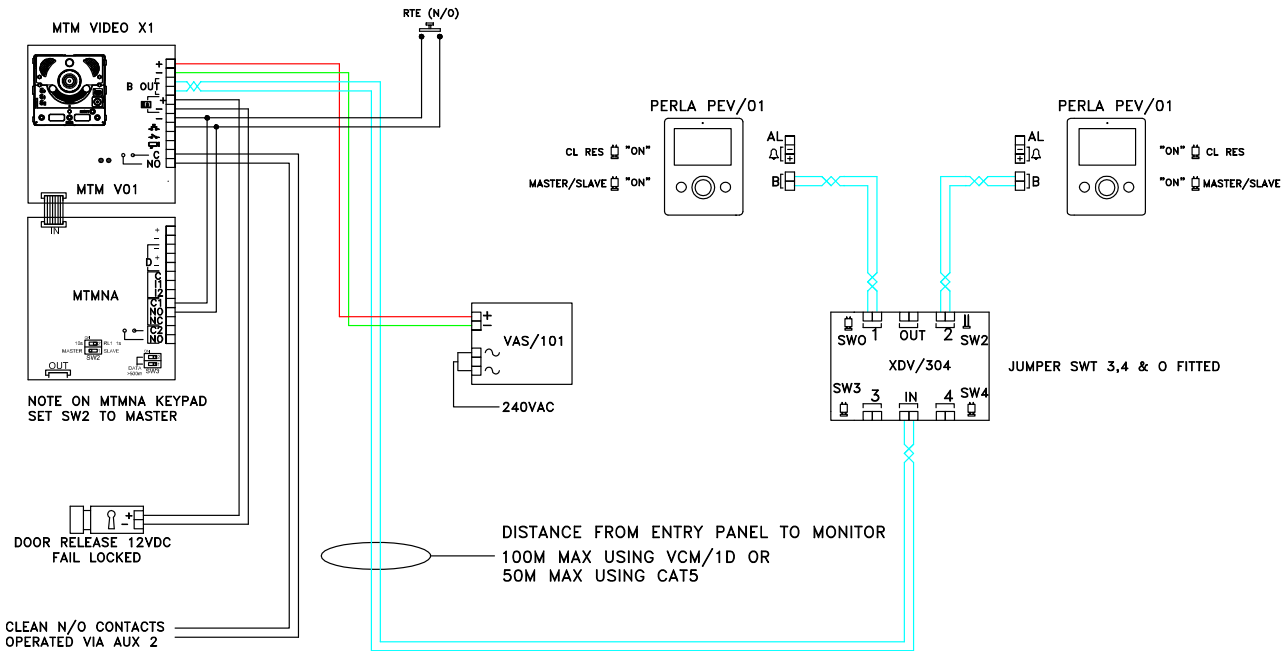
MTM VIDEO KEYPAD > PERLA VIDEO



DRAWING SUITABLE FOR X1 KITS

VRWSPWV1	MTMSKPWV1	MTMSKPBV1
VRWFKPWV1	MTMFKPWV1	MTMFKPBV1
VRWSPBV1	MTMSVRKPWV1	MTMSVRKPBV1
VRWFKPBV1	MTMFVRKPWV1	MTMFVRKPBV1

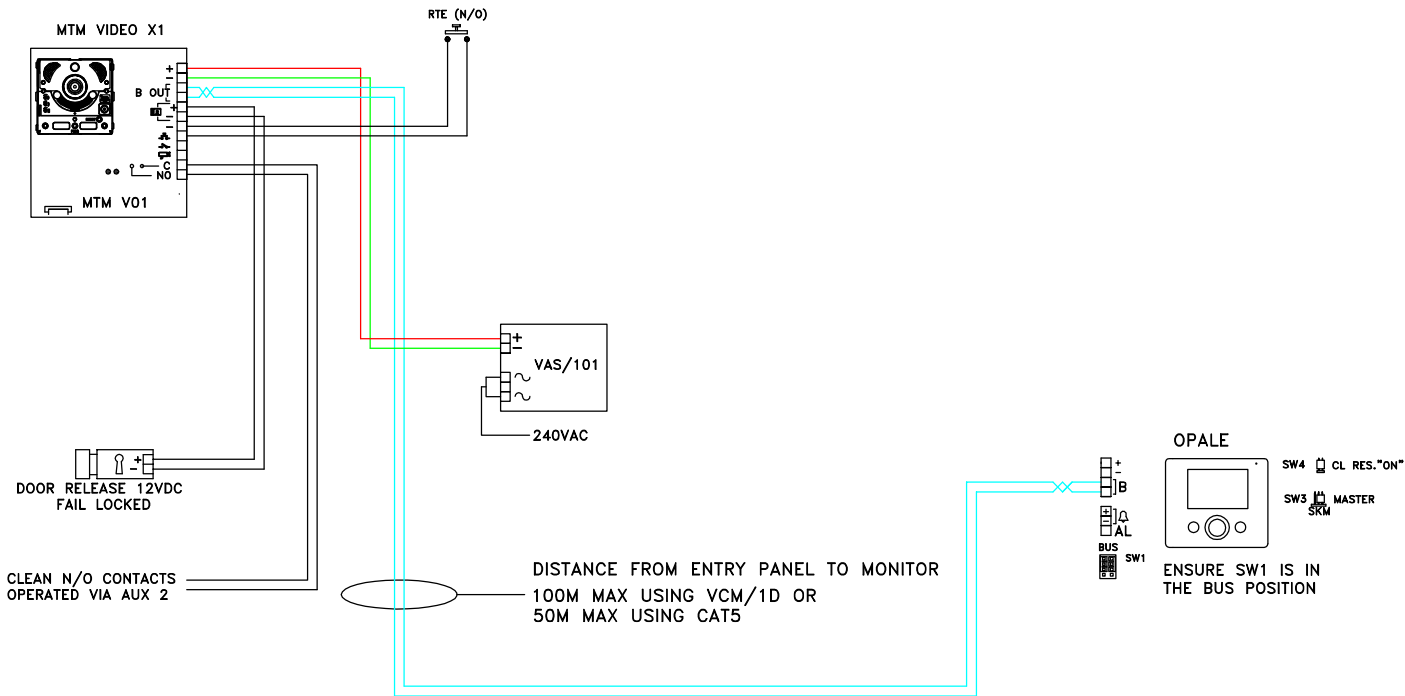
MTM VIDEO KEYPAD > PERLA VIDEO 2 WAY



DRAWING SUITABLE FOR SYSTEM X1 KITS

VRWSPWV2	MTMSKPWV2	MTMSVRKPWV2
VRWFKPWV2	MTMFKPWV2	MTMFVRKPWV2
VRWSPPBV2	MTMSKPBV2	MTMSVRKPBV2
VRWFKPBV2	MTMFKPBV2	MTMFVRKPBV2

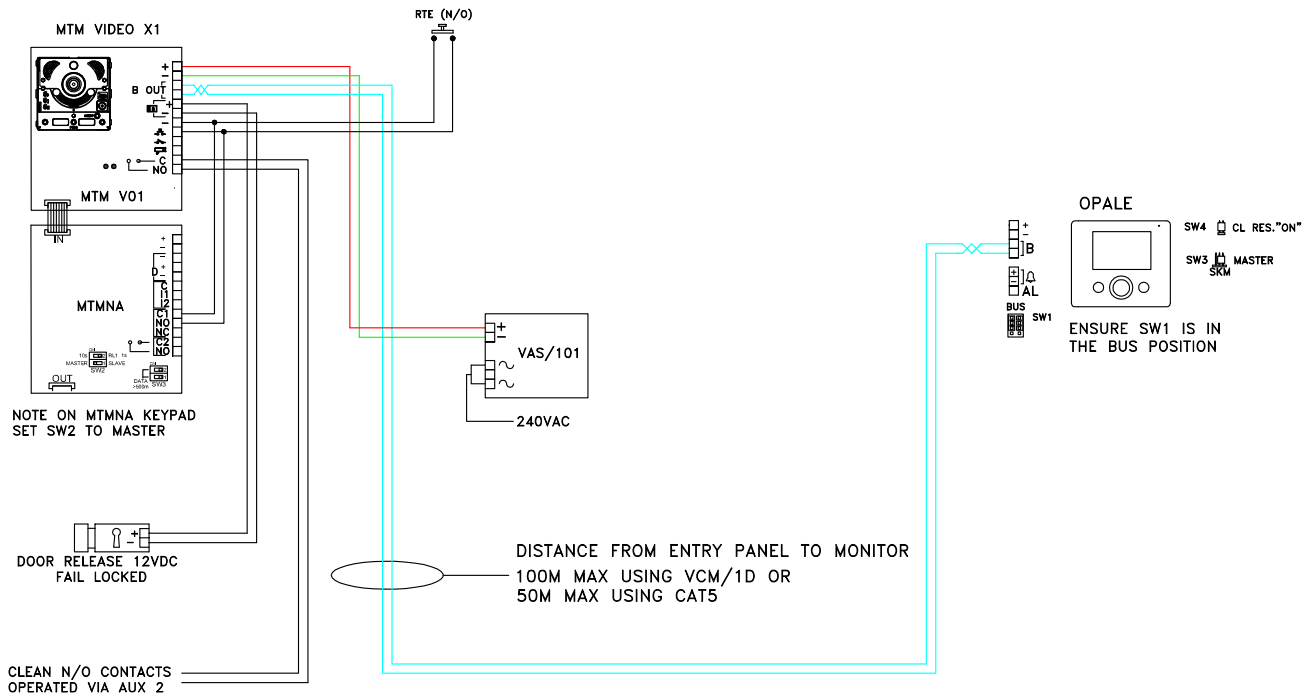
MTM VIDEO > OPALE VIDEO



DRAWING SUITABLE FOR X1 KITS

VRWSOW1	MTMSOW1	MTMSVROW1
VRWFOW1	MTMFOW1	MTMFVROW1
VRWSOB1	MTMSOB1	MTMSVROB1
VRWFOB1	MTMFOB1	MTMFVROB1

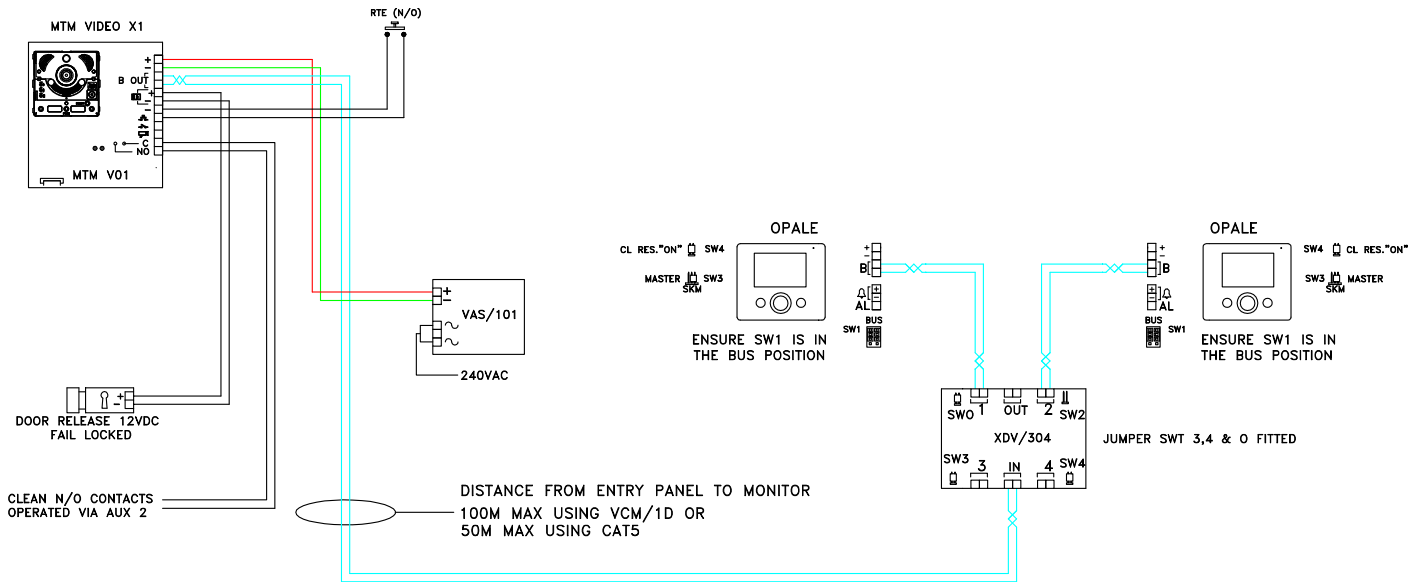
MTM VIDEO KEYPAD > OPALE VIDEO



DRAWING SUITABLE FOR X1 KITS

VRWSKOW1	MTMSKOW1	MTMSVRKOW1
VRWFKOW1	MTMFKOW1	MTMFVRKOW1
VRWSKOB1	MTMSKOB1	MTMSVRKOB1
VRWFKOB1	MTMFKOB1	MTMFVRKOB1

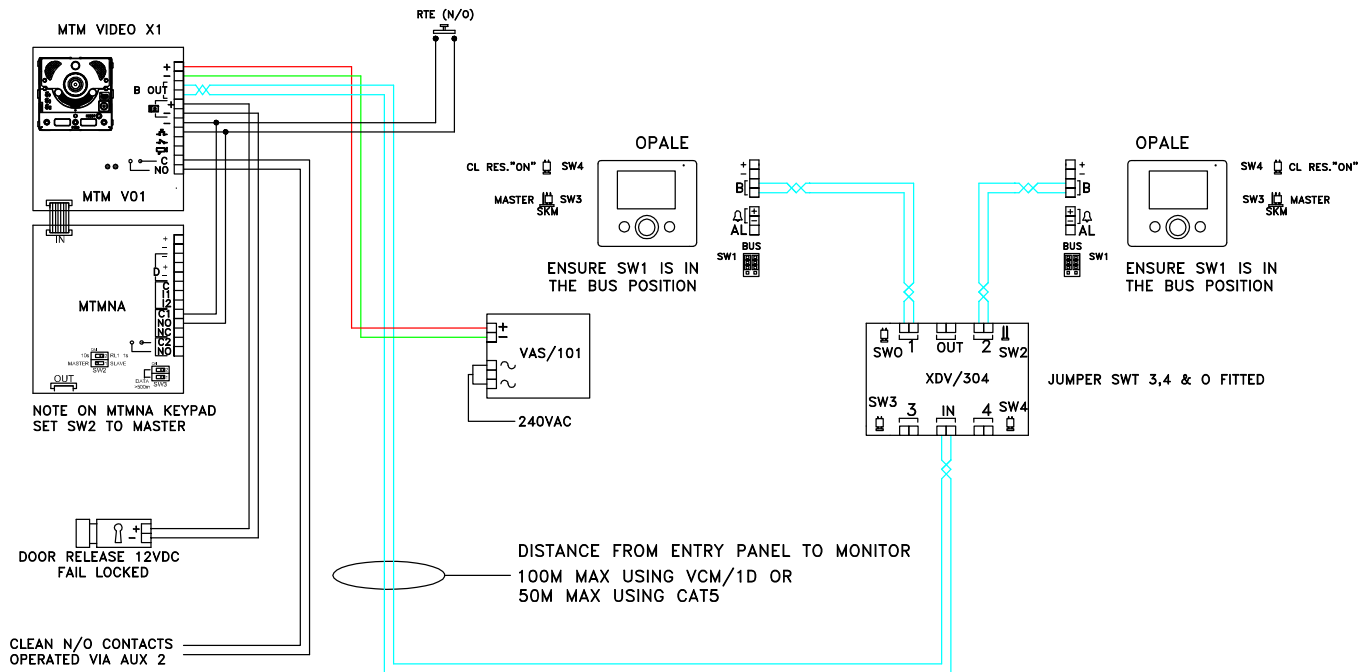
MTM VIDEO > OPALE VIDEO 2 WAY



DRAWING SUITABLE FOR SYSTEM X1 KITS

VRWSOW2	MTMSOW2	MTMSVROW2
VRWFOW2	MTMFOW2	MTMFVROW2
VRWSOB2	MTMSOB2	MTMSVROB2
VRWFOB2	MTMFOB2	MTMFVROB2

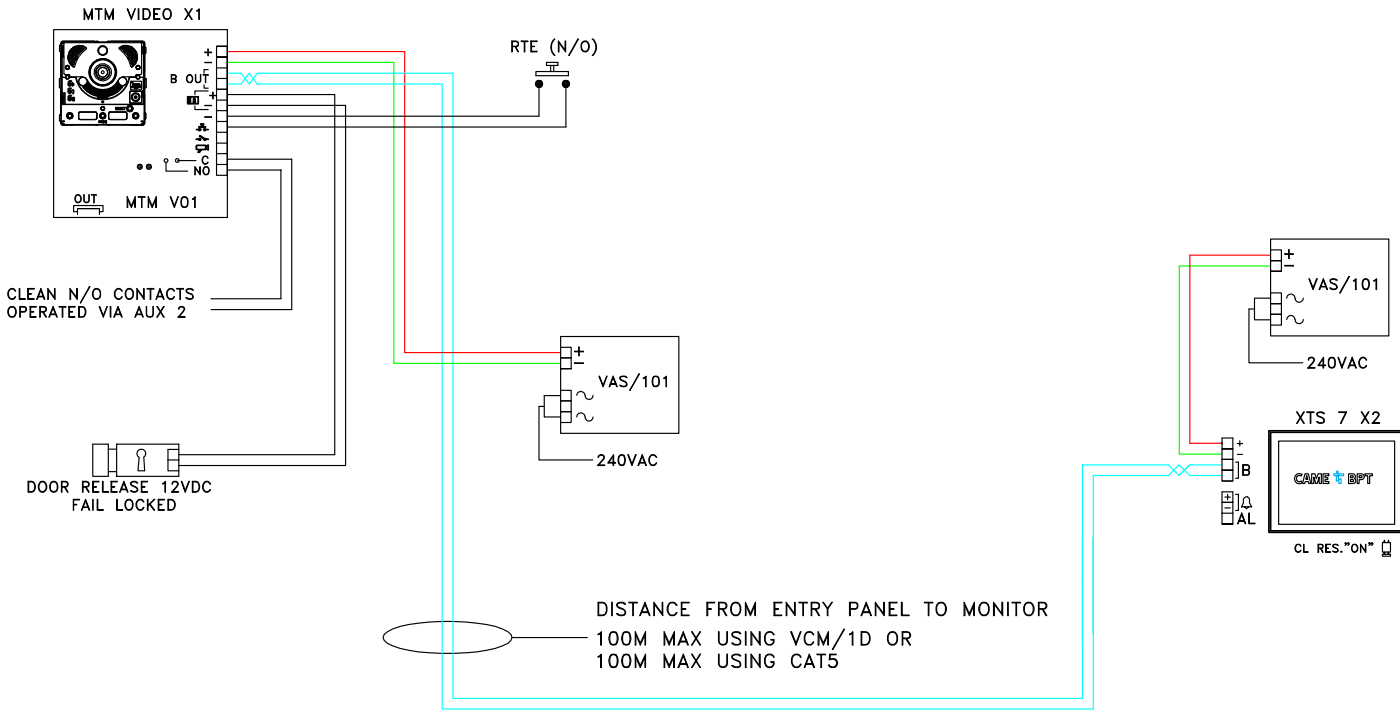
MTM VIDEO KEYPAD > OPALE VIDEO 2 WAY



DRAWING SUITABLE FOR SYSTEM X1 KITS

VRWSKOW2	MTMSKOW2	MTMSVRKOW2
VRWFKOW2	MTMFKOW2	MTMFVRKOW2
VRWSKOB2	MTMSKOB2	MTMSVRKOB2
VRWFKOB2	MTMFKOB2	MTMFVRKOB2

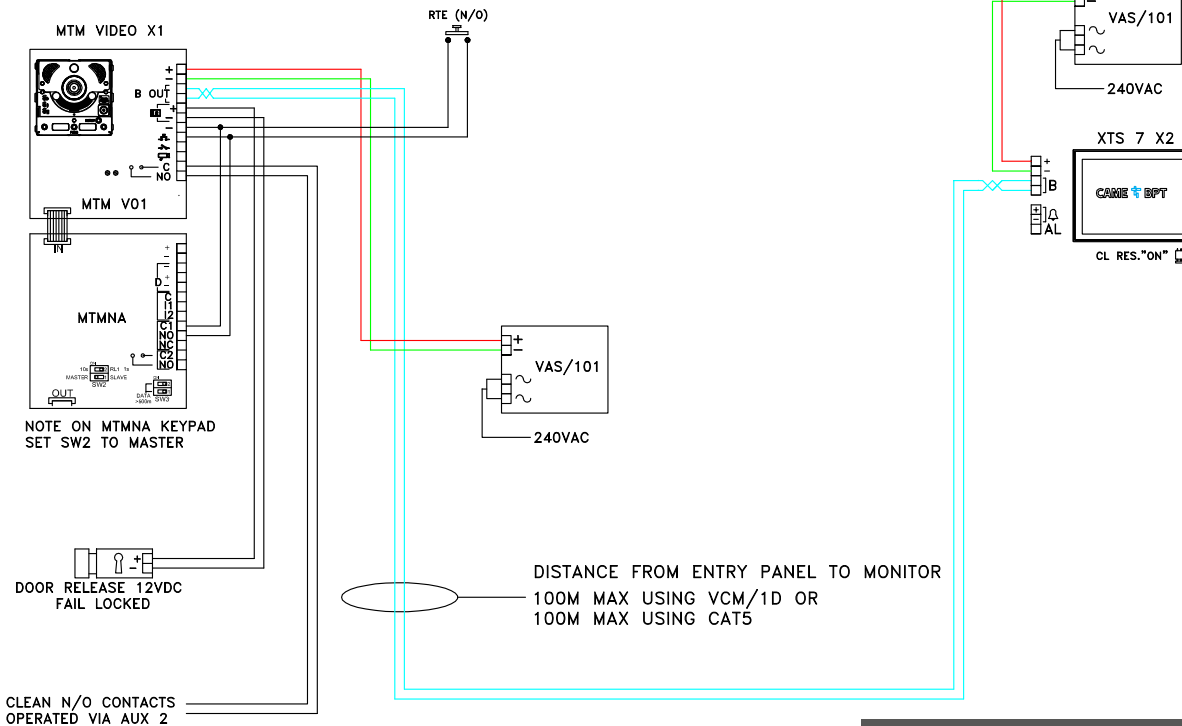
MTM VIDEO > XTS 7 VIDEO



DRAWING SUITABLE FOR X1 KITS

VRWS7XW1	MTMS7XW1	MTMSVR7XW1
VRWF7XW1	MTMF7XW1	MTMFVR7XW1
VRWS7XB1	MTMS7XB1	MTMSVR7XB1
VRWF7XB1	MTMF7XB1	MTMFVR7XB1

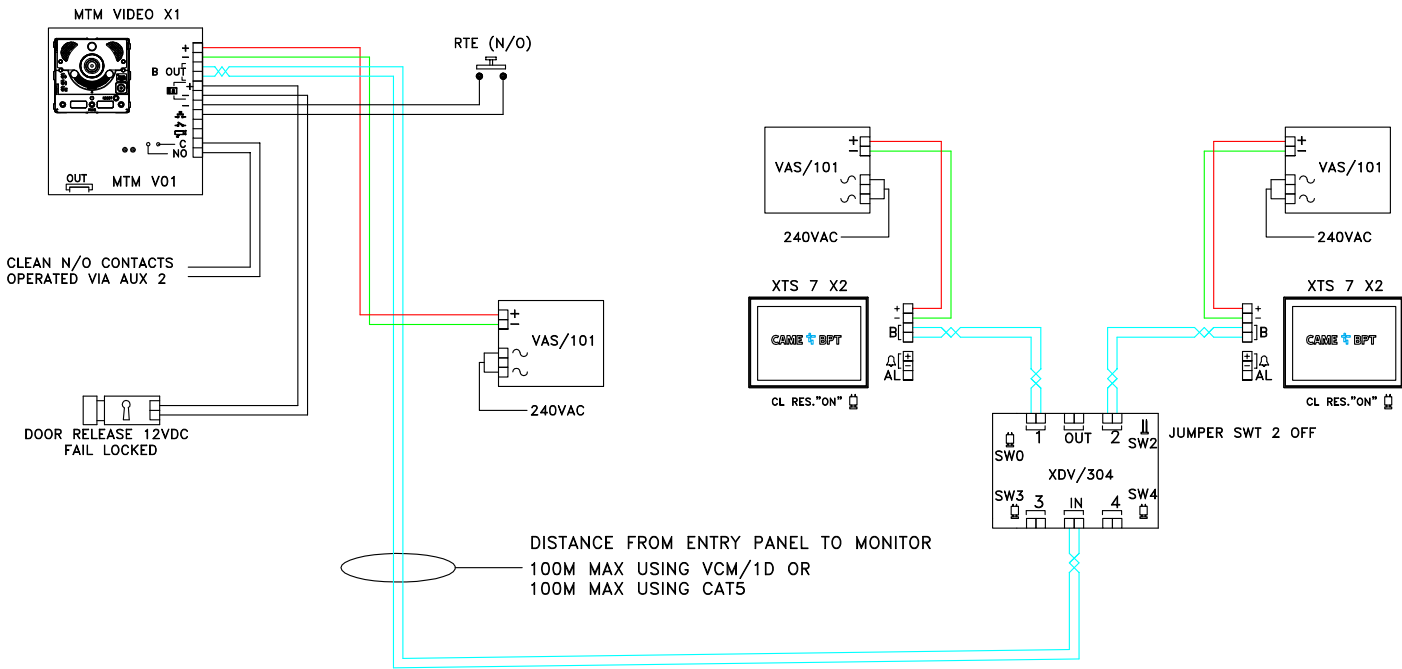
MTM VIDEO KEYPAD > XTS 7 VIDEO



DRAWING SUITABLE FOR X1 KITS

VRWSK7XW1	MTMSK7XW1	MTMSVRK7XW1
VRWFK7XW1	MTMFK7XW1	MTMFVRK7XW1
VRWSK7XB1	MTMSK7XB1	MTMSVRK7XB1
VRWFK7XB1	MTMFK7XB1	MTMFVRK7XB1

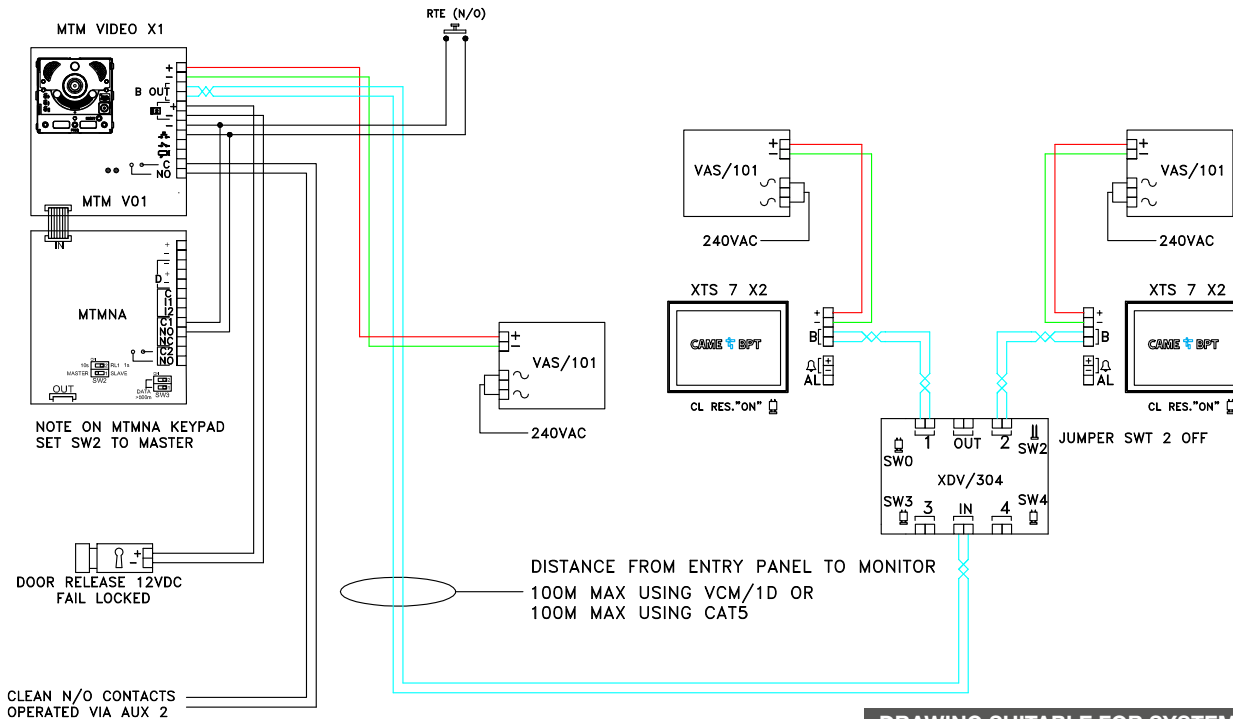
MTM VIDEO > XTS 7 VIDEO 2 WAY



DRAWING SUITABLE FOR SYSTEM X1 KITS

VRWS7XW2	MTMS7XW2	MTMSVR7XW2
VRWF7XW2	MTMF7XW2	MTMFVR7XW2
VRWS7XB2	MTMS7XB2	MTMSVR7XB2
VRWF7XB2	MTMF7XB2	MTMFVR7XB2

MTM VIDEO KEYPAD > XTS 7 VIDEO 2 WAY



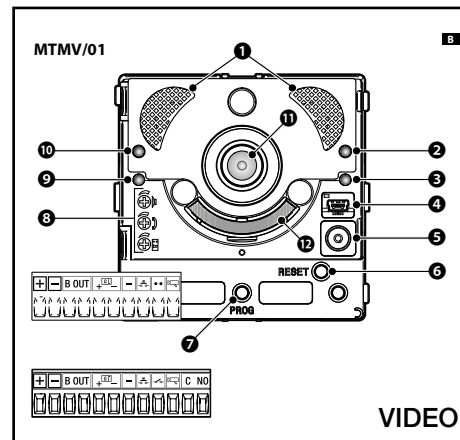
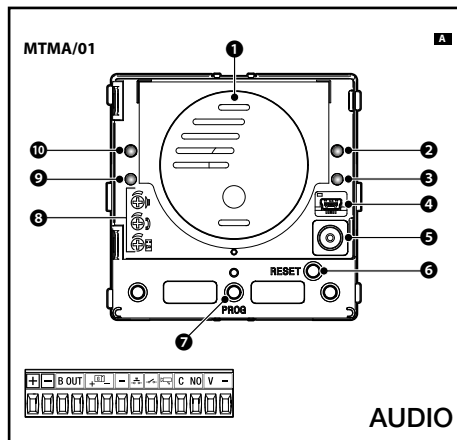
DRAWING SUITABLE FOR SYSTEM X1 KITS

VRWSK7XW2	MTMSK7XW2	MTMSVRK7XW2
VRWFK7XW2	MTMFK7XW2	MTMFVRK7XW2
VRWSK7XB2	MTMSK7XB2	MTMSVRK7XB2
VRWFK7XB2	MTMFK7XB2	MTMFVRK7XB2

QUICK START - MANUAL PROGRAMMING GUIDE

FOR MTMV01 or MTMA01 Panel with VAS/101, VAS/100 or VA/301

To successfully install a door entry system you must have at least 1 x MTMV01 or 1 x MTMA01 (Entry Panel Module), 1 x VAS/101, VAS/100 or VA/301 (Power Supply) and 1 x CAME Audio / Video Internal unit (Receiver). Excluding non-electronic parts, if you are short of any of these items a fully working system cannot be installed.



KEY

- | | | |
|------------------------|---------------------------|-----------------------|
| 1. Speaker | 5. Microphone | 9. Blue LED |
| 2. Yellow LED | 6. Not Used | 10. Red LED |
| 3. Green LED | 7. Programming button | 11. Video Camera Lens |
| 4. Mini USB (PC Prog.) | 8. Audio / Door Time Adj. | 12. Illumination |

PRE-COMMISSIONING CHECKS

IMPORTANT - Carry out the following checks BEFORE switching on the 230v AC electrical supply

1. Ensure the 230v electrical supply is isolated i.e the Fused Connection Unit turned OFF, also ensure the power supply to the system cannot be turned back ON accidentally. Now check all connections are made correctly to all 230v powered devices.
2. Check that the 18VDC supply is connected to all relevant devices, observing correct polarity.
3. Ensure that all dip switches and jumper links on all devices have been set as per the installation drawing including the “Bus / Local” and “Master / Slave” jumpers on all receivers where present.

ONLY if all the above checks have been completed and are correct progress as follows:

1. Switch ON the 230v electrical supply at the Fused Connection Unit and WAIT AT LEAST ONE MINUTE before moving to the next step.
2. With the system now powered test with a multimeter to ensure that you have 18VDC at all points indicated on the installation drawing.
3. Using your multimeter check across the B bus at all points for 15V to 22VDC. The B bus is not polarity conscious.

Programming systems with only one entry panel – NOTE! Always program the entry panel first

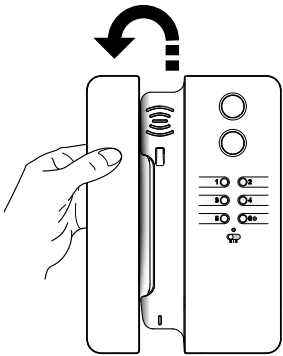
1. To program, press the programming button(7) on the entry panel for 5 seconds, note that the Orange programming LED turns on. WAIT 5 seconds before continuing.
2. Ensure that the Red (10) and Blue (9) LED's are flashing on the entry panel, if not press the programming button(7) for 5 more seconds.
3. Press and hold the FIRST PHYSICAL call button on the entry panel (this is not necessarily your first actual call button) until the Blue LED(9) stops flashing, wait until the Green LED(3) starts flashing.
4. The entry panel is now programmed and the Green LED(3) indicates you are now ready to program the receivers.

QUICK START - MANUAL PROGRAMMING GUIDE

To **PROGRAM RECEIVERS** carry out the following *only after* the entry panel has been programmed

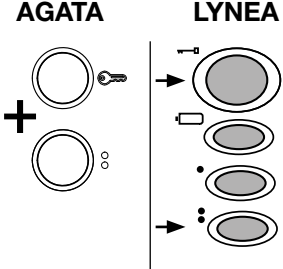
AGATA / LYNEA VIDEO RECEIVERS

1 Lift handset off the hook




2 Press Door Release (KEY) & AUX2 (2 dot) buttons together until a video image appears on screen

AGATA LYNEA




3 Check for video image

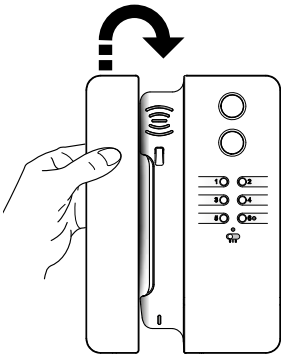


For illustration purposes only

4 At the entry panel, press and hold the call button (hold until audible confirmation tone) to program to this receiver



5 Place handset on hook



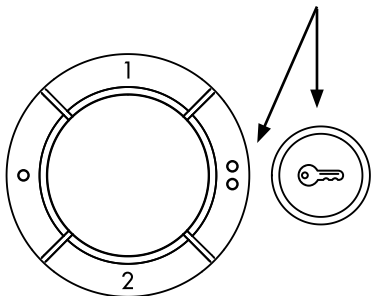
While still in programming mode, if programming further receivers of a different type, please refer to the relevant receiver programming section.

If programming more Agata / Lynea Video receivers, repeat the above process on the next receiver. Press prog button quickly once to exit programming.

For Agata and Lynea Audio Receivers follow steps 1, 2, 4 and 5 on the opposite page for the video version.
NOTE: Agata audio handset buttons are similar to Lynea (for step 2 above).

AGATA / LYNEA / PERLA AUDIO ONLY RECEIVERS

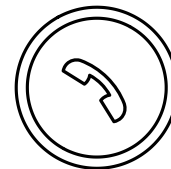
- 1** Press Door Release (KEY) and AUX 2 (2 dot) buttons together, check for audio from the panel



- 2** At the entry panel, press and hold the call button (hold until audible confirmation tone) to program it to this receiver.



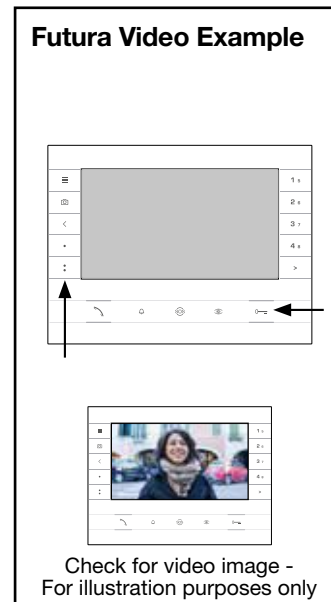
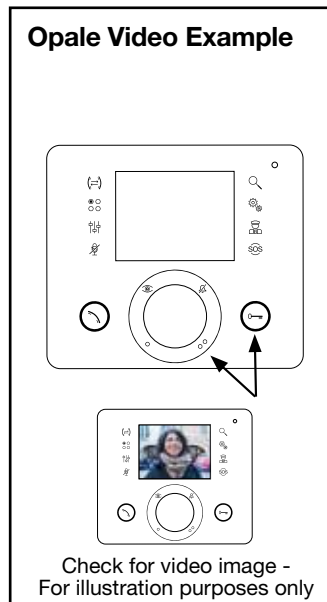
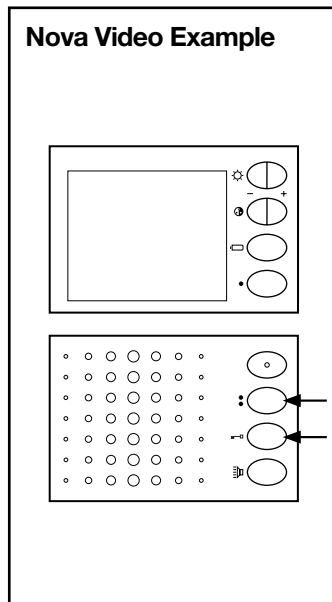
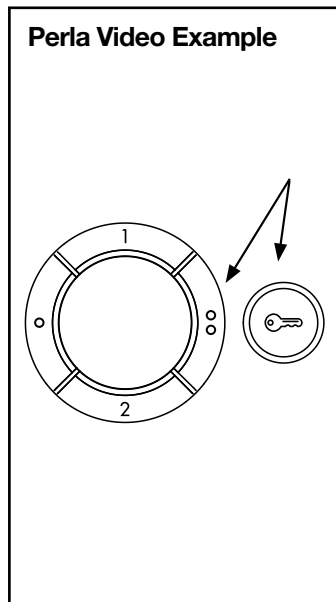
- 3** Press the handset button to close communication



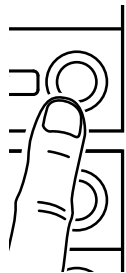
QUICK START - MANUAL PROGRAMMING GUIDE

FOR PERLA, OPALE, NOVA & FUTURA VIDEO RECEIVERS

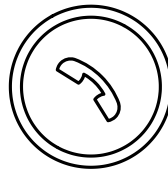
1 Press Door Release (KEY) and AUX 2 (2 dot) buttons (see below) together until you have a video image



2 At the entry panel, press and hold the call button (hold until audible confirmation tone) to program it to this receiver.



3 Press the handset button to close communication



While still in programming mode, if programming further receivers of a different type, please refer to the relevant receiver programming section. If programming more Perla, Opale, Nova or Futura Video receivers, repeat the above process on the next receiver.

QUICK START - MANUAL PROGRAMMING GUIDE

FOR XTS 7 X2

1 From the homepage, swipe left then select 'Settings'



2 Then swipe up and select 'Advanced settings' at the bottom



Adjustment of camera viewing angle on video receivers (Global function), if required.

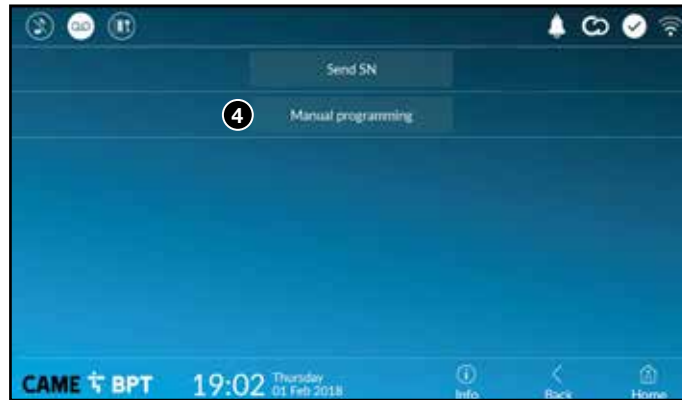
1. Press the programming button on the entry panel for 5 seconds, note the Orange LED starts flashing.
2. At a video receiver, lift the handset (if fitted) and press the camera or 'eye' button to activate the entry panel.
3. Use AUX 1 and AUX 2 buttons to step through nine viewing angles, replace handset or hangup when the desired view has been selected.
4. Exit programming by pressing the programming button on the entry panel for less than 1 second, note the Orange LED goes off.

- 3** Now select 'Configure X2' OR 'X2 Configuration'



- 5** Click 'OK' to close the message box that appears and after a short delay you will be presented with video from the entry panel.
- 6** Go to the entry panel, press and hold the call button (hold until audible confirmation tone) to program it to this receiver.

- 4** Select 'Manual Programming' You will be prompted for a password. Enter '112233' and then 'OK'



While still in programming mode, if programming further receivers of a different type, please refer to the relevant receiver programming section. If programming more XTS receivers, repeat the above process on the next receiver.

Once all receivers have been assigned to their call button, press the programming button for less than 1 second, note the Orange LED goes off. The system is now programmed.

MTM NA 'QUICK' START INSTRUCTIONS

The following instructions relate to Keypad supplied from new only and set to Master.

See SW2 selector on rear of keypad for master/slave selection.

At time of first installation, no entry codes have been pre-assigned for this purpose, additionally a default Master/Engineering code 0000 has been assigned.

If you simply wish to set or change the relay codes; follow strictly as set out below.

To enter keypad programming once powered up:

Enter 0000**. The lower light strip on the keypad turns red to indicate that you have entered the programming mode.

If you wish to change the pre-assigned engineering code 0000 to your users preferred code, follow strictly as set out below.

Enter this sequence: 10 xxxx (new engineering code 4 digits) # **

To set an entry code associated with user ID 001 for relay 1.

(999 slots available)

Enter this sequence: 21 2 001* XXXX (new code 4-8 digits) # **

To set an entry code associated with user ID 001 for relay 2.

(999 slots available)

Enter this sequence: 22 2 001* XXXX (new code 4-8 digits) # **

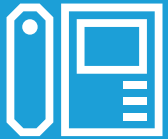
To delete all entry codes associated user ID 001 for relay 1.

Enter this sequence: 21 5 001# **

To delete all entry codes associated user 001 ID for relay 2.

Enter this sequence: 22 5 001# **

CAME  **BPT**



CAME BPT UK LTD - North

Unit 1B Sills Road,
Willow Farm Business Park,
Castle Donington,
DE74 2US

T 0115 921 430

F 0115 921 431

CAME BPT UK LTD - South

Liberta House, Maxted Road,
Maylands Industrial Est,
Hemel Hempstead, Herts.
HP2 7DX

T 01442 230 800

F 01442 244 729

CAME BPT Ireland,

Unit 9, The Westway Centre,
Ballymount,
Dublin 12,
Ireland.

T 01 450 7442

F 01 450 7451

CAME.COM